



EXTRAS

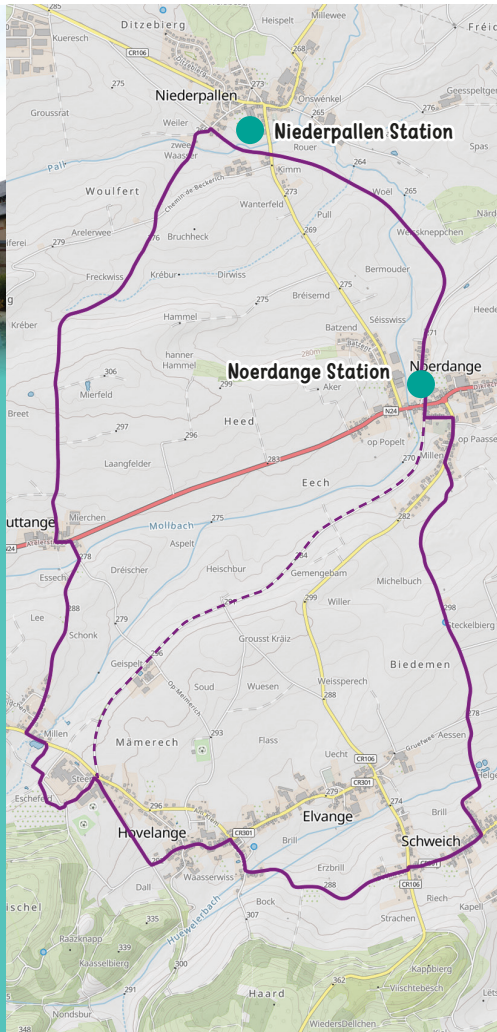
Jhangeli West Tour

If you are looking for a bigger adventure, try the 11 km Jhangeli West Tour. It takes you on a wonderful family cycling route through five villages in the municipalities of Beckerich and Redange. Along the way, you will discover wide-open fields, meadows and forests. You can stop to visit the old railway stations while solving the quiz questions.

Starting point and parking:

- Jhangelis Gare
- Rue de Noerdingen
- L-8545 Niederpallen

11 km    



TIP

Shortcut via PC12

If you would like to shorten or simplify the route, you can take the national cycle path PC12 as a shortcut for the Jhangeli West Tour. This connection also passes through beautiful countryside and is perfect for a shorter version of the tour.

PICTURES © JENISKA PHOTOGRAPHY



JHANGELIS GARE

Railway Station in Niederpallen

In the former station of the Noerdange–Martelange narrow-gauge railway, you will find a small museum that tells the story of the Jhangeli railway line. Outside, there is a locomotive and a railway carriage. The railway line between Noerdange and Martelange was built in 1890 and closed in 1953. Today, you can cycle along the former railway route.

Starting point and parking:

- Rue de Noerdingen
- L-8545 Niederpallen

Opening hours:

Outdoor area open at all times
Visits to the small museum by appointment only



The ghost of the “Kropemann” at Jhangeli Station

“Today we’re travelling by train!” Grandma says as she takes us by the hand in Ettelbruck. The train to Mersch is already waiting. We get on board and find seats by the window.

As the landscape rolls by, Grandma points outside. “Long time ago, a train ran from Noerdange to Martelange. There was a small railway station in Niederpallen, dating back to your great-grandparents’ time.”



“Can we go there?” Mia asks curiously.

“Of course,” Grandma smiles. “We’ll just take the bus later.”

After our train ride, we travel by bus to Niederpallen. The old station is still there, with its thick stone walls and a train with carriages. The station walls look old but sturdy. It is easy to imagine how trains once stopped here, with whistles, steam and people waving from the platform.

After exploring the station, we continue walking along today’s cycle path, where the train once travelled. The route passes beautiful meadows and smells of summer. Water sparkles in the small streams beside the path, and dragonflies fly above them. It is quiet, almost too quiet.

Suddenly, something rustles in the bushes. A dark shape moves.

“The Kropemann,” whispers Emil.



Grandma nods. “People say he lives in the water and warns children when they get too close to the riverbank.”

We quickly step back. Then we realise it was only a branch.

We laugh, and Grandma gently strokes Emil’s head. “Soon we’ll visit the Kropemann Festival in Redange. It’s a wonderful street festival, and you’ll get an “Eisekuch” (waffle)! Then the fear of the “Kropemann” will quickly disappear.”

Quiz



This quiz is all about the two small railway stations in Niederpallen and Noerdange. Between them lies a route of around 1.65 km (one way), where you can answer exciting questions.

You can explore the route on foot or by bicycle. Just remember that you will also need to return.

If you walk, you can also try the Hiking Bingo along the way.

Starting point and parking:

12, Arelerstrooss
L-8550 Noerdange

Noerdange

You start your quiz in Noerdange. There is still an old train station there.

1. What is the name of this railway station?

Take a close look at the entrance door.



2. Since when have the doors of this station been closed?

3. What is hanging on the outside wall?

Now follow the cycle path to Niederpallen.

The "Jhangelis" station in Niederpallen



4. There is still an old train here with two carriages. How many windows does the carriage have?

(Look at all four sides)

5. What colour is the train?

6. Train traffic has stopped today, but there is now a beautiful cycle path here. Which present-day cycle path follows the route once used by the Jhangelis railway?

At the end of the route, you will find an information board from the Journey through time-routes. Take a closer look at it!

7. Up to how many tonnes was that in a single day?

You have successfully completed the quiz!

You can now return to Noerdange or continue on the longer Jhangelis West Tour route (a further 9 km).

EXTRAS

Hiking bingo on the comfort hiking trail

The comfort hiking trail in Redange/Attert invites you to enjoy nature at a relaxed pace and without any rush.

The 2.1 km route is barrier-free and easy to walk, with a smooth surface and only gentle inclines. This makes it ideal for families with pushchairs and for wheelchair users. Don't forget to bring your hiking bingo!



Starting point and parking:

 Parking Bëschkierfecht
CR304 (Redange-Beckerich)



EXTRAS



Swimming pool

The large swimming pool in Redange/Attert offers an indoor area with a large swimming pool and a children's pool, as well as an outdoor area with a sunbathing lawn, terrace, wave pool and sauna. Highlights include the large family slide and the fastest racing slide in the Greater Region. Here you can reach speeds of up to 65 km/h. Wow!

Starting point and parking:

 28, rue de la Piscine
L-8508 Redange/Attert





Hiking bingo in Redange

Do you think hiking is boring? With this hiking bingo, you certainly won't be bored on your walk. Take the bingo sheet with you on your tour. Each person gets a different bingo card. All you need is a pen, and you're ready to go!

Keep your eyes open! Whenever you spot one of the illustrated objects or animals, mark the matching square. As soon as you find four pictures in a diagonal, vertical or horizontal line, shout "BINGO!". The first person to complete a row wins.

Ready, steady, go! Who can spot the most? Who is the fastest?



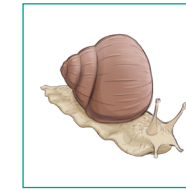
Mushrooms



Animal Traces



Butterfly



Slug



Peg



Cobweb



Feather



Dosh



Bench



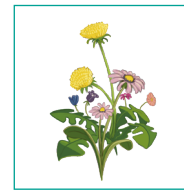
Beetle



Bird



Acorn



Flower



Direction Sign



Water, Brook or Pond



Stump



Cobweb



Bench



Direction Sign



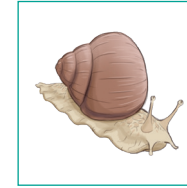
Feather



Mushrooms



Beetle



Slug



Peg



Beetle



Stump



Dosh



Animal Traces



Butterfly



Acorn



Direction Sign



Cobweb



Flower



Peg



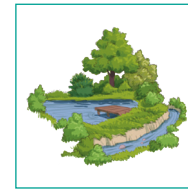
Slug



Acorn



Feather



Water, Brook or Pond



Bird



Dosh



Bird



Butterfly



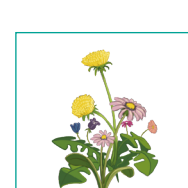
Water, Brook or Pond



Mushrooms



Stump



Flower



Animal Traces



Bench